

# FIGURE

## *Block-In Shape*

### GOAL

Learn how block-in shapes can help you accurately draw any figure.

### TECHNIQUE

Envelope Shapes  
Block-in shape

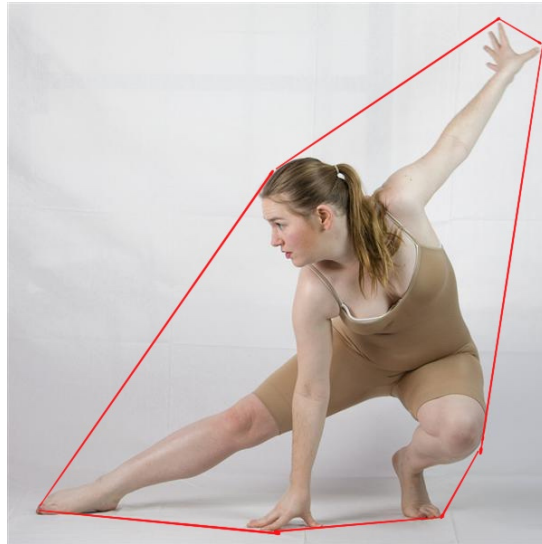
### INSTRUCTION

Simply put, the **block-in shape** is a simplified, outline drawing of the subject being drawn. When drawing figures, the block-in shape becomes critical in creating a blueprint and guide for the artist. The block-in shape helps artist to bring the form to life and have realistic proportions and form.



*Example of a block-in shape.*

To draw the block-in shape, begin by drawing an envelope shape around the entire figure. Remember, this should only be a few lines to help you get a general idea of the shape and form of the figure.

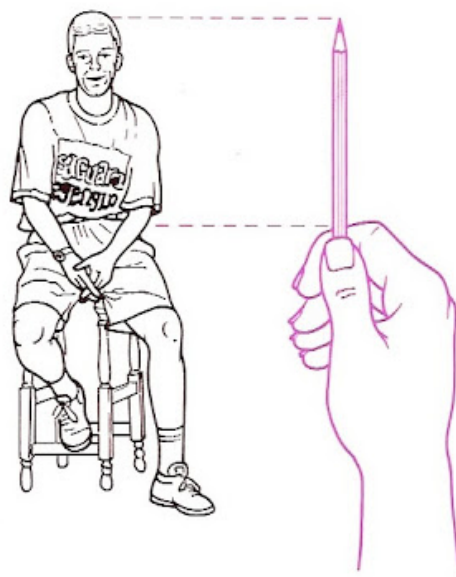


*Example of an envelope shape.*

Once you find the envelope shape, begin creating the block-in shape by further placing straight lines around the figure. Be sure to note the various angles and proportions of the body while creating your block-in shape.



*Example of a block-in shape.*

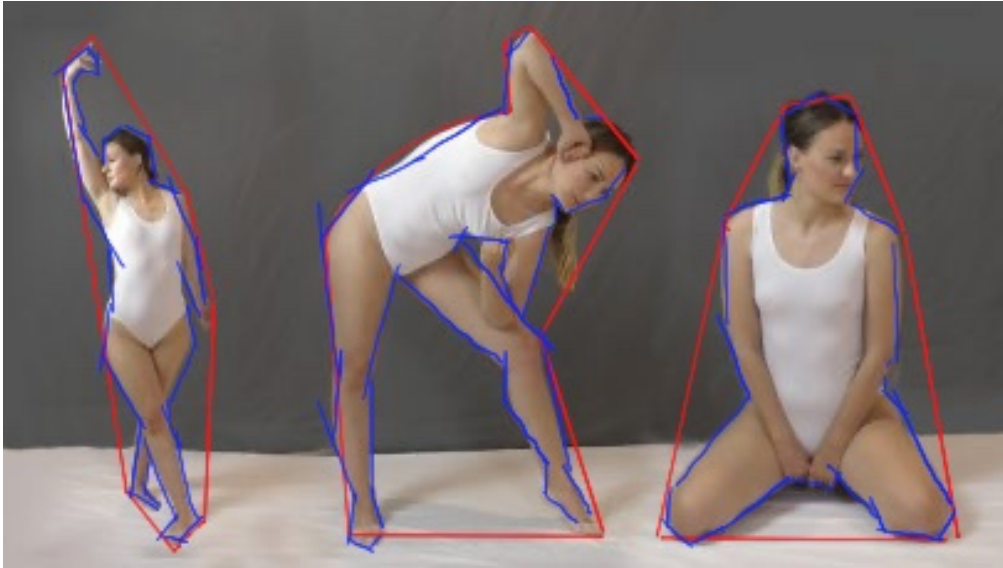


*Example of how to use your ruler to check proportions while drawing your block-in shape*

For additional help, watch this video:

[https://www.youtube.com/watch?v=HzydK56tr9U&feature=emb\\_rel\\_pause](https://www.youtube.com/watch?v=HzydK56tr9U&feature=emb_rel_pause)

## EXAMPLES



*Examples of an envelope shape and block-in shape in a figure.*

## PRACTICE

Practice drawing the envelope and block-in shape of the following figure.





## PRACTICE

Practice drawing the envelope and block-in shape of the following figure.



## PRACTICE

Practice drawing the envelope and block-in shape of the following figure.





## PRACTICE

Practice drawing the envelope and block-in shape of the following figure.





---

## RESOURCES

ShuChih Art Studio does not own any of the images in this lesson plan, all images were taken from other workbooks and online examples.

<https://www.thedrawingsource.com/drawing-figures.html>

<http://www.foundmyself.com/forum/viewtopic.php?f=13&t=2800>